



**REGIONAL SPECIALISED METEOROLOGICAL CENTRE-TROPICAL
CYCLONES, NEW DELHI**

SPECIAL TROPICAL WEATHER OUTLOOK

DEMS-RSMC TROPICAL CYCLONES NEW DELHI DATED 21.05.2020

TROPICAL WEATHER OUTLOOK FOR NORTH INDIAN OCEAN (THE BAY OF BENGAL AND ARABIAN SEA) VALID FOR NEXT 120 HOURS ISSUED AT 1500 UTC OF 21.05.2020 BASED ON 1200 UTC OF 21.05.2020.

DEPRESSION LAY OVER BANGLADESH

THE DEEP DEPRESSION [REMNANT OF THE SUPER CYCLONIC STORM 'AMPHAN'] MOVED SLIGHTLY NORTHWARDS WITH A SPEED OF 07 KMPH DURING PAST 06 HOURS, FURTHER WEAKENED INTO A **DEPRESSION** AND LAY CENTERED AT 1200 UTC OF 21ST MAY 2020 OVER **BANGLADESH** NEAR LAT. 25.4°N AND LONG. 89.6°E ABOUT 300 KM EAST-NORTHEAST OF KOLKATA (42807), 110 KM SOUTH-SOUTHEAST OF DHUBRI(42404) AND 80 KM SOUTH-SOUTHEAST OF RANGPUR (41984).

IT IS VERY LIKELY TO CONTINUE TO MOVE NORTH-NORTHEASTWARDS AND WEAKEN FURTHER INTO A WELL MARKED LOW DURING NEXT 12 HOURS.

AS PER INSAT-3D SATELLITE IMAGERY BASED ON 1200 UTC OF 21ST MAY SHOWS THE VORTEX (AMPHAN) LIES OVER CENTRAL PARTS OF BANGLADESH & NEIGHBOURHOOD. THE VORTEX CENTER IS NOT CLEARLY DEFINED. ASSOCIATED SCATTERED LOW/MEDIUM CLOUDS WITH EMBEDDED ISOLATED WEAK TO MODERATE CONVECTION OVER BANGLADESH, ASSAM, MEGHALAYA, TRIPURA AND MIZORAM.

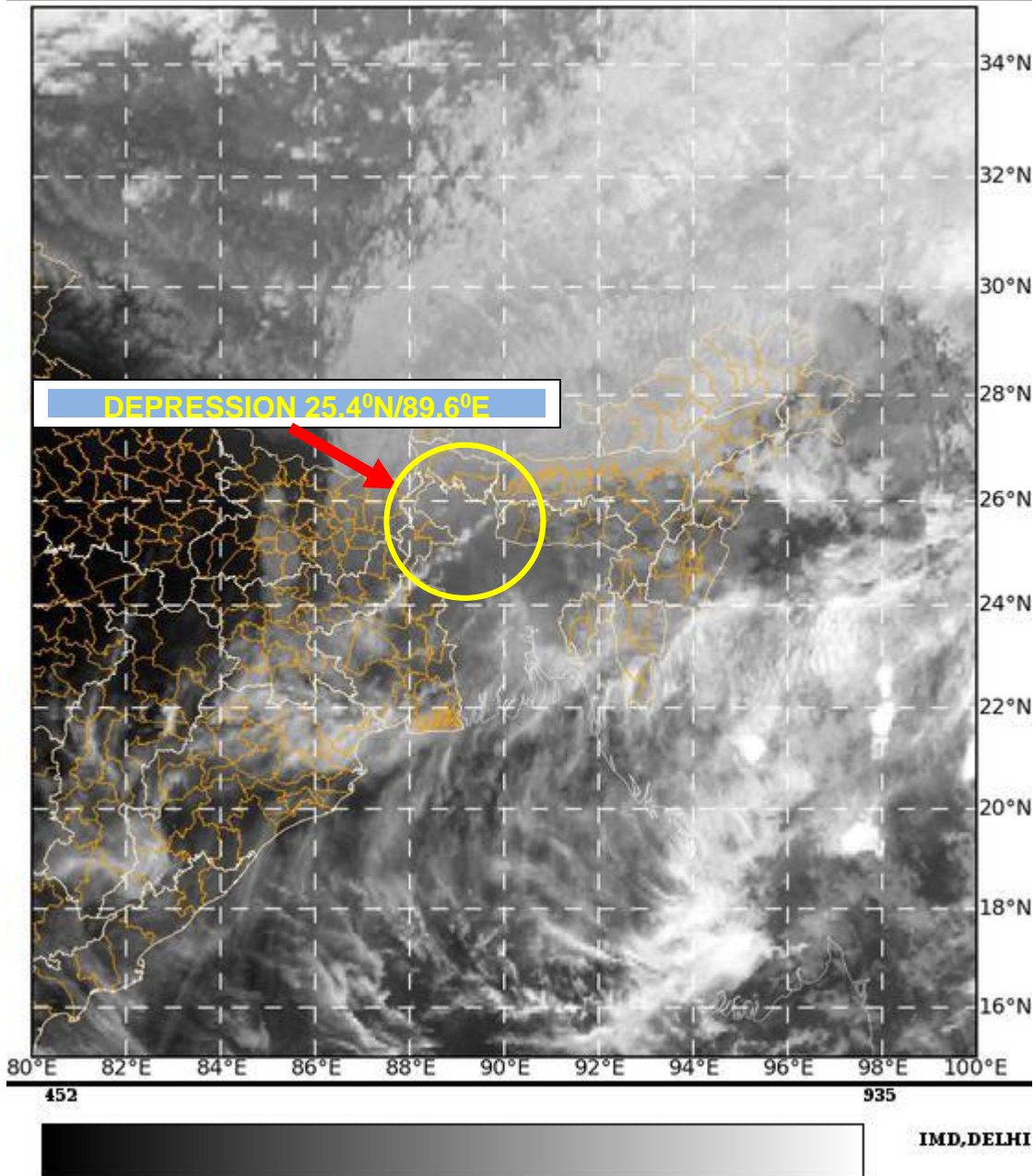
THE ESTIMATED MAXIMUM SUSTAINED WIND SPEED IS 20 KNOTS GUSTING TO 30 KNOTS. THE ESTIMATED CENTRAL PRESSURE IS **995** HPA.

UPPER TROPOSPHERIC RIDGE RUNS ROUGHLY ALONG LATITUDE 19.0N OVER BAY OF BENGAL.

**SUNITHA DEVI
SCIENTIST-E, RSMC, NEW DELHI**

PROBABILITY OF CYCLOGENESIS (FORMATION OF DEPRESSION)

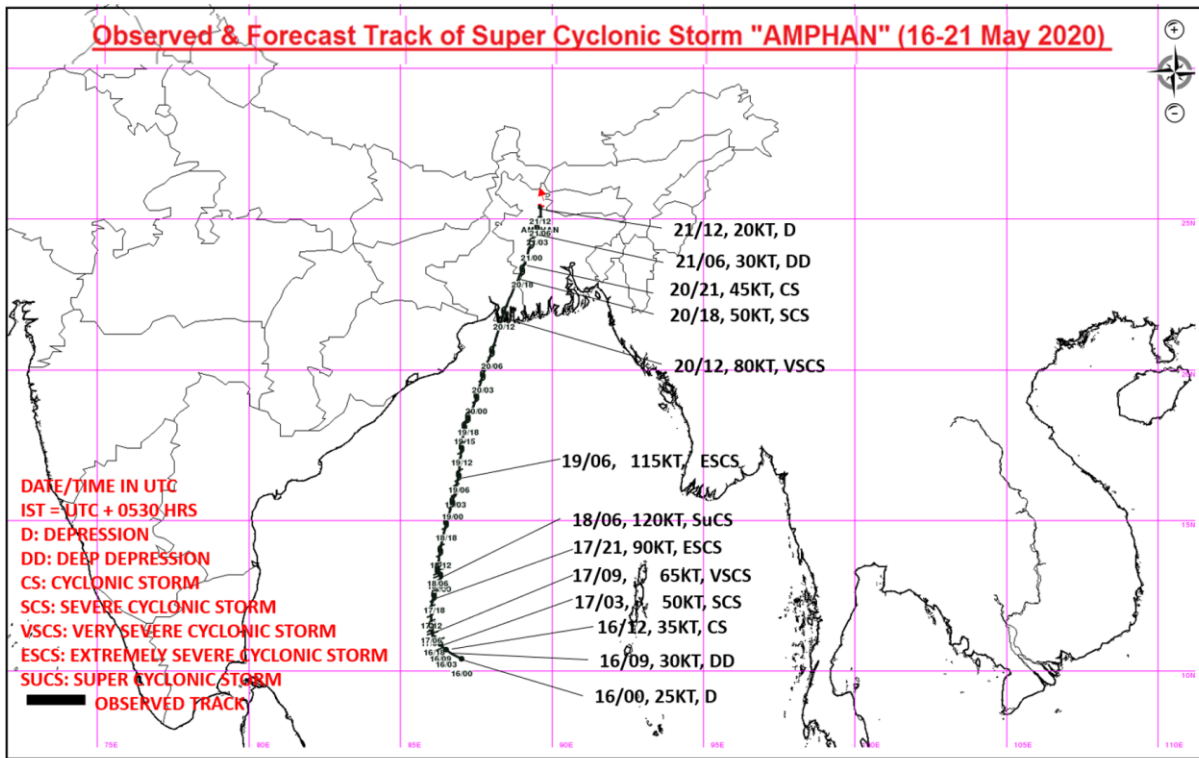
NIL: 0%, LOW: 1-25%, FAIR: 26-50%, MODERATE: 51-75% AND HIGH: 76-100%



PROBABILITY OF CYCLOGENESIS (FORMATION OF DEPRESSION)

NIL: 0%, LOW: 1-25%, FAIR: 26-50%, MODERATE: 51-75% AND HIGH: 76-100%

Observed & Forecast Track of Super Cyclonic Storm "AMPHAN" (16-21 May 2020)



PROBABILITY OF CYCLOGENESIS (FORMATION OF DEPRESSION)

NIL: 0%, LOW: 1-25%, FAIR: 26-50%, MODERATE: 51-75% AND HIGH: 76-100%